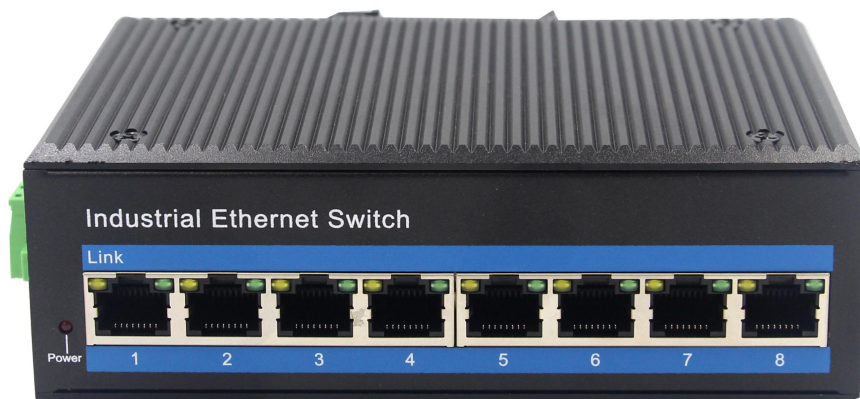


## Gigabit 8-port Industrial Ethernet POE Switch



**UT-N60N08GP**



### **UTEK TECHNOLOGY (SHENZHEN) CO., LTD.**

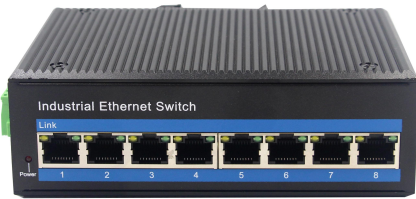
Add: Room 1001, Building 7, Skyworth Innovation Valley, No. 8, Tangtou No.1 Road, Shiyuan Old Street, Bao 'an District, Shenzhen

Tel: +86-755-81202008

Fax: +86-755-27886083

Http: [www.uotek.com](http://www.uotek.com)





- Adopt high quality optoelectronic integrated modules to provide good optical and electrical characteristics
- Ensure reliable data transmission and long lifecycle
- Support full-duplex or half-duplex mode with auto-negotiation capability
- Network port supports fully automatic cross-identification
- Storage and forwarding mechanism is built-in and supports multiple protocols
- Compliant with industrial-grade operation standards, with an average trouble-free operation of more than 300,000 hours
- Working power supply: DC 48-57V with reverse connection protection
- Lightning surge protection (power supply): 5000A (8/20 μs)



## OVERVIEW

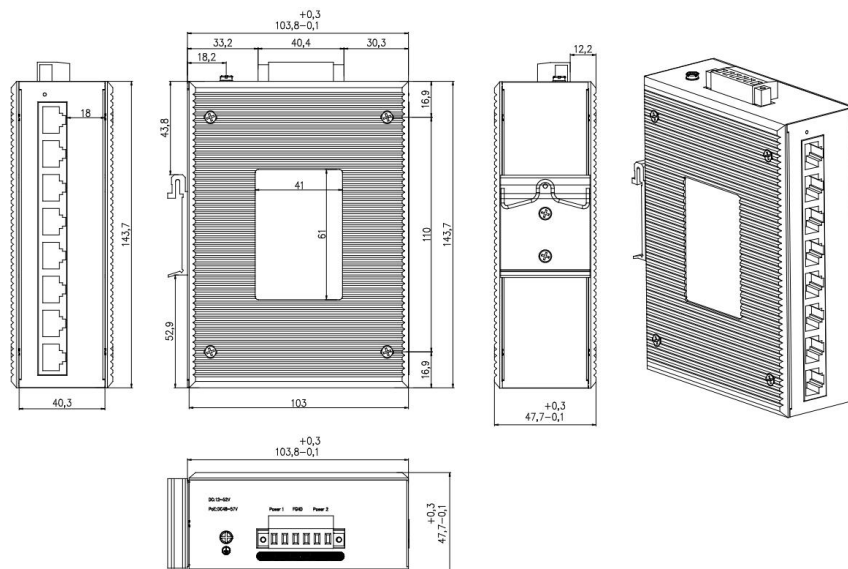
UT-N60N08GP is an industrial Ethernet POE switch with 8 Gigabit ports, supporting 8 100Base-T/1000Base-TX POE ports. The UT-N60N08GP switch has an operating temperature range of -40°C to 80°C. It is rugged enough to adapt to various harsh environments and can be easily placed in compact control boxes. The rail mounting features, wide temperature operation, IP40 rated housing and LED indicators make the UT-N60N08GP a plug-and-play industrial grade device that provides a reliable and convenient solution for networking Ethernet devices.

## SPECIFICATION

<b>Item</b>	<b>UT-N60N08GP</b>
Product Name	Gigabit 8-port Industrial Ethernet POE Switch
<b>Hardware Specification</b>	
<b>Interface</b>	
RJ45 port	8*RJ45, 100/1000BaseT(X) auto-detection, full/half duplex MDI/MDI-X
PIN	V+ ,V+, V-,V- correspond to pin 1,2,3,6 (default)
<b>LED Indicator Light</b>	
LED indicator light	Power indicator: PWR Interface Indicator : Electric Port (Link)
<b>Switching Performance</b>	
Forwarding rate	15Mpps
Transmission mode	Store-and-Forward
MAC address	8K
Buffer size	2Mbit
Backplane bandwidth	20G
Switching latency	<10μs
<b>Power Requirement</b>	
Input voltage	DC48 ~ 57V Dual power redundancy backup
Access terminal	Phoenix terminal
Power consumption	<5W
	Support dual power redundancy
	Support built-in overcurrent 4.0A protection

	Support reverse connection protection
<b>Operating Environment</b>	
Operating temperature	-40 ~ 80°C
Operating humidity	5 ~ 95%
Storage temperature	-40 ~ 85°C
Storage humidity	5 ~ 95% (no condensing)
<b>Mechanical Characteristic</b>	
Housing	IP40 protection level, metal housing
Dimension	143.7 x 103 x 44.2mm (W x D x H)
Weight	640g
Installation method	DIN rail/ wall-mounted
<b>Ethernet Standard</b>	
Standard	IEEE802.3 10BASE-T; IEEE802.3i 10Base-T; IEEE802.3u; 100Base-TX/FX; IEEE802.3ab 1000Base-T; IEEE802.3z 1000Base-X; IEEE802.3x; IEEE802.3af; IEEE802.3at;
POE Standard	Standard PoE : IEEE802.3af/ IEEE802.3at PoE port : 1-8 ports support PoE Output Power : Maximum power 15.4W (IEEE 802.3af) Maximum power 30W (IEEE 802.3at) POE port auto recognition af/at
Industry Standard	EMI : FCC Part 15 Subpart B Class A, EN 55022 Class A EMS : IEC(EN)61000-4-2(ESD) : ±8kV contact discharge, ±12kV air discharge IEC(EN)61000-4-3(RS) : 10V/m(80~1000MHz) IEC(EN)61000-4-4(EFT) : Power line: ±2kV ; Data line: ±1kV IEC(EN)61000-4-5(Surge) : Network port : ±2kV CM//±1kV DM ; IEC(EN)61000-4-6(RF conduction) : 3V(10kHz~150kHz),10V(150kHz~80MHz) IEC(EN)61000-4-16(Common mode conduction) : 30V cont. 300V,1s IEC(EN )61000-4-8 Shock : IEC 60068-2-27 Freefall : IEC 60068-2-32 Vibration : IEC 60068-2-6

## Dimension



**ORDERING**

Model	Description
UT-N60N08GP	8-port Gigabit Ethernet POE-powered switch, DIN-rail, DC48-57V power supply - Wide temperature (-40°C-85°C) - CE-RoHS-FCC - Ministry of Public Security inspection report - MIIT network access license