

# UT-7722

## PCI to 2-port RS-485/422 serial card User manual

### I. Overview

UT-7722 is a PCI to 2-port RS-485/422 serial card, capable of converting single-ended PCI signals to RS-485/422 signals with fast transient suppression protector. When the two ends of the TVS tube are subjected to an instantaneous high-energy shock, it can reduce the impedance of its two ends at a very high speed and absorb a large current, thus clamping the voltage at its two ends to a predetermined value and protecting the circuit components behind from damage due to transient high-voltage shock. This protector can effectively suppress lightning (LIGHTNING) and ESD, provide 600W lightning surge protection for signal lines, as well as surges and transient over voltages generated by various causes on the line, and the extremely small inter-pole capacitance ensures high-speed transmission of RS-485/422.

### II. Product Features

#### Hardware Interface

Connection type: DB9 male 2

IBus: PCI

#### Signal

RS-422: T/R+, T/R-, RXD+, RXD-, GND

RS-485: Data+(A), Data-(B), GND

Transmission rate: 300bps-115.2Kbps

Data bits: 5, 6, 7, 8

Stop bits: 1, 2

Parity bits: support odd, even, no parity, blank 0, sign1

Flow control: RTS/CTS XON/XOFF

Operating temperature: -40°C~85°C

Interface protection: RS-485/422 interface signal line 600W surge protection

Support system: Windows 2012/8/8.1/2016/10/XP/Vista/7/2003/2008/

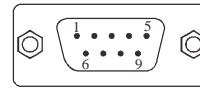
98/NT4.0/Linux

### III. Connectors and Signals

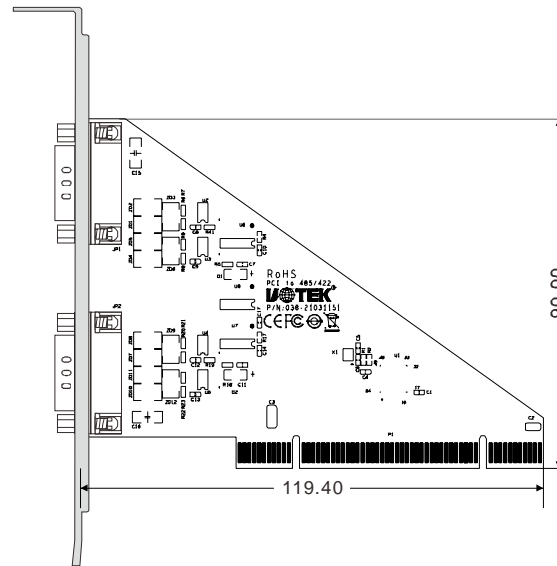
1.DB9 pin type: RS-485/422 output signal pin assignment (Port1-Port2)

DB9 (PIN)	Output signal	RS-422 full duplex wiring	RS-485 half duplex wiring
1	T/R-	A+	RS-485(A+)
2	T/R+	B-	RS-485(B-)
3	RXD+	A+	/
4	RXD-	B-	/
5	GND	GND	GND
6,7,8,9	/	/	/

DB9



### IV. Product View



### V. Failure and Troubleshooting

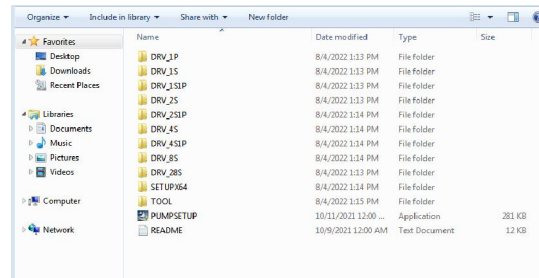
#### 1. Data communication failure

- A. Check whether the PCI interface is plugged in
  - B. Check whether the wiring is wrong
  - C. Check whether the terminals are connected well
- #### 2. Data loss or error

- A. Check whether the data rate and format are consistent at both ends of the data communication device.

### VI. Install the Driver Steps

- 1. Save the driver to the local, shut down the computer and insert the serial card, open the computer.

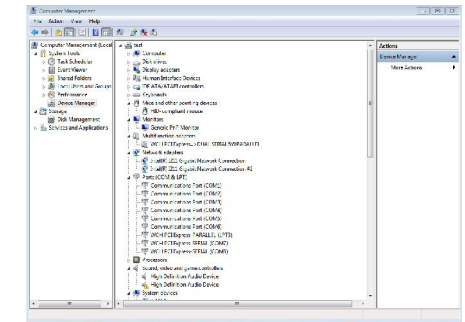


Method 1: the computer pop-up installation driver, find the local driver save location, according to the computer version corresponding installation.



Method 2: directly click the first step in the PUMPSETUP.EXE program into the default automatic identification of the card, click to install the driver, driver. Installation progress is complete, close the program, enter the device manager can see the installation is complete.

Method 3: Enter the device manager to find the multi-serial device, right click to update the device driver, find the local driver save location, according to the computer version corresponding to the installation, after installation into the port options to view.



If there is no virtual serial port before, the system default COM port for COM3/4, according to the actual port, so UT-7722 driver installation is complete.