

## Model: UT-7702

(Product Name: PCI to 2-port RS-232 multi-serial card)

# Datasheet



### **UTEK TECHNOLOGY (SHENZHEN) CO., LTD.**

Add: Room 1001, Building 7, Skyworth Innovation Valley, No. 8, Tangtou No.1 Road,  
Shiyan Old Street, Bao'an District, Shenzhen

Tel: +86-755-81202008

Fax: +86-755-27886083

Http: [www.uotek.com](http://www.uotek.com)

## 1. Overview

UT-7702 is a PCI to two-port RS-232 serial port card, with a fast transient suppression protector designed to protect the RS-232 interface, can convert single-ended PCI signals into RS-232 signals. Adopt today's advanced TVS tube, under normal circumstances, the TVS tube is in a high group state.

When the two ends of the TVS tube are subjected to an instantaneous high-energy impact, it can reduce the impedance at both ends at a very high speed and absorb a large current, thereby clamping the voltage at both ends to a predetermined value to protect the following circuit components from being damaged by transient high voltage shocks. This protector can effectively suppress lightning (LIGHTNING) and ESD, provide TX/RX 600W lightning surge protection, and the surge and transient overvoltage generated on the line for various reasons, and the extremely small inter-electrode capacitance ensures the high-speed transmission of RS-232.

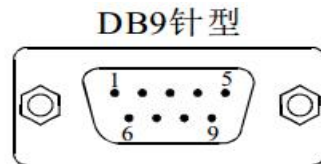
## 2. Technical Parameters

Hardware interface	
Connection type	2 DB9 males
Bus	PCI
RS-232	DCD, RXD, TXD, DTR, GND, DSR, RTS, CTS, RI
Transmission rate	300bps-115.2Kbps
Data bits	5, 6, 7, 8
Stop bit	1, 2
Parity	Support odd, even, no parity, blank 0, flag 1
Flow control	RTS/CTS XON/XOFF
Operating temperature	0°C~70°C
Interface protection	RS-232 interface signal line 600W surge protection
Support system	Windows 98/2000/me/NT4.0/vista/xp/vista/7/8/2003/2008/2012/8/8.1/2016/10

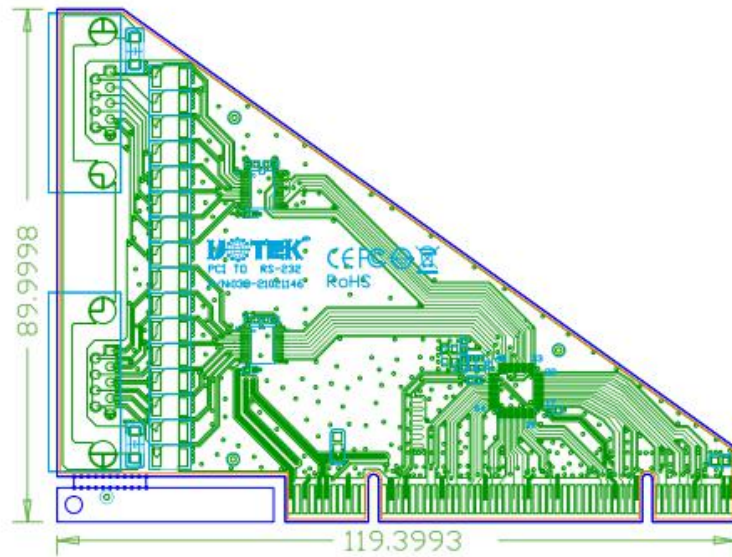
## 3. Connectors and Signals

1. DB9 pin type: RS-232 output signal pin assignment (Port1-Port2)

DB9 pin	RS-232 interface signal
1	Carrier detect DCD
2	Receive data SIN(RXD)
3	Send data SOUT(TXD)
4	Data Terminal Ready DTR
5	Signal line GND
6	Data Terminal Ready DSR
7	request to send RTS
8	clear send CTS
9	Ring indication RI



## 4. Dimensions



## 4. Appearance

