

DIN-Rail Unmanaged Industrial Ethernet Switch



UT-6408GC

Gigabit 8-Port unmanaged Ethernet Switch



UTEK TECHNOLOGY (SHENZHEN) CO., LTD.

Add: Room1001, Building 7, Skyworth Innovation Valley, No. 8, Tangtou No.1 Road, Shiyan Old Street, Bao 'an District, Shenzhen

Tel: +86-755-81202008

Fax: +86-755-27886083

Http: www.uotek.com





- Adopt high quality opto-electric integration modules to provide good optical and electrical characteristics, ensure reliable data transmission and long lifecycle
- Supports full-duplex and half-duplex, auto negotiation
- Auto 10/100/1000Mbps
- Fully automatic recognition of network interface
- Plug and play for easy access
- Operating temperature: -20 ~ 70°C
- Voltage input: 12/24/48VDC (10.8~52.8VDC), support reverse connection protection



OVERVIEW

The UT-6408GC is an 8-port Gigabit unmanaged Ethernet switch that provides DC input positive and negative protection to prevent burnout of the instrument. It has a compact design and supports industry standard DIN-rail mounting, it is easy to install in any industrial network application.

SPECIFICATION

Protocol Standards

IEEE 802.3 10Base-T, IEEE 802.3u 100Base-TX,
IEEE 802.3ab 1000Base-T, IEEE 802.3x

Interfaces

RJ45 interface: 8* 10/100/1000Base-X, auto-detection,
full/half duplex, auto MDI/MDI-X

Switching Performance

Forwarding rate: 1,488,095pps
Transmission mode: store and forward
MAC address size: 4K
Cache size: 1Mb
Backplane bandwidth: 16G
Max. frame length: 16KB

LED indicator light

PWR power light, 1~8 network indicator

Mechanical Characteristics

IP protection level: IP40
Installation: DIN-Rail Mounted

Power Requirement

Voltage input: 12/24/48VDC(10.8~52.8VDC)
Interface terminal: 1 pluggable 3-pin terminal block
Overload protection: Support
Reverse connection protection: Support

Power consumption

130mA@24Vmax

Mechanical Dimension

Dimension (W x H x D): 100mm x 85mm x 47mm
Weight: 600g
Packaging dimension: 190mm x 182mm x 65mm

Operating Environment

Operating temperature: -20 ~ 70°C
Storage temperature: -40 ~ 85°C
Relative humidity: 0~95% (non-condensing)

Industrial Standards

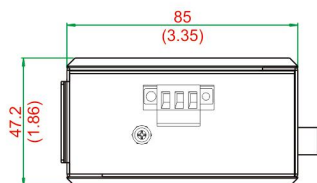
EMI:
FCC Part 15 Subpart B class A, EN55022 class A
EMS:
IEC(EN)61000-4-2(ESD)

IEC(EN)61000-4-3(RS)
 IEC(EN)61000-4-4(EFT)
 IEC(EN)61000-4-5(Surge)
 IEC(EN)61000-4-6(CS)

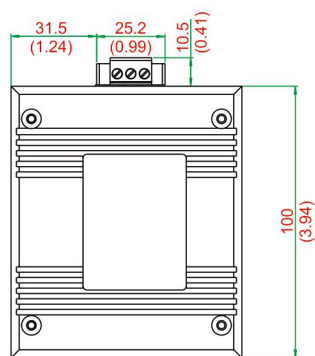
IEC(EN)61000-4-8
 IEC 60068-2-27(Shock)
 IEC 60068-2-32(Freefall)
 IEC 60068-2-6(Vibration)

Dimension

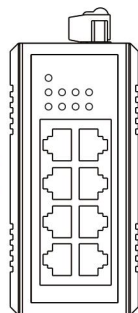
Unit: $\frac{\text{mm} \pm 1}{(\text{inch}) \pm 0.04}$



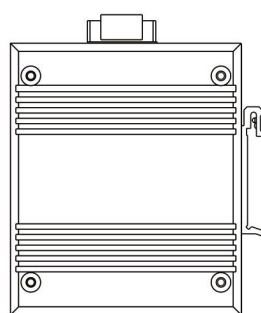
Top view



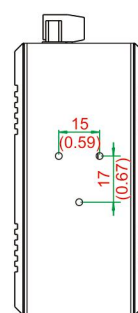
Left side view



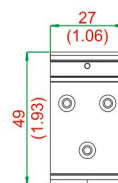
Front view



Right side view



Rear view



Shim

DIN-Rail mounted

ORDER INFORMATION

Model	Interface
	10/100/1000Base-T
UT-6408GC	8