

Model: UT-7884

(Product Name: Mini PCI-E to 4-port RS-485/422 high-speed serial card)

Datasheet



UTEK TECHNOLOGY (SHENZHEN) CO., LTD.

Add: Room 1001, Building 7, Skyworth Innovation Valley, No. 8, Tangtou No.1 Road,
Shiyan Old Street, Bao 'an District, Shenzhen

Tel: +86-755-81202008

Fax: +86-755-27886083

Http: www.uotek.com

1. Overview

UT-7884 is a universal Mini PCI-E serial card designed for POS, ATM and other applications, which can be used in industrial automation system manufacturing and system integration.

UT-7884 provides 4 RS-485/422 serial ports, which can be connected to a variety of serial devices such as PC, terminal, modem, printer, scanner, etc. Each port can reach a data rate of 921.6Kbps and provides modem control signals to ensure the compatibility of serial device peripherals.

2. Main Functions & Features

- 4-Port RS-485/422mini PCI-E Multi-Serial Card

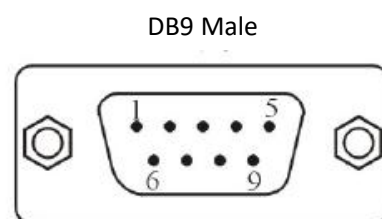
3. Technical Parameters

- Hardware Interface
Connection Type: 4 x 1.25T-9AB sockets
BUS: X1 2.5Gbps PCI Express
- Signal
RS-422: T/R+, T/R-, RXD+, RXD-, GND
RS-485: Data+(A) Data-(B) GND
- Transmission rate: 300bps-921.6kbps
- Data bits: 5, 6, 7, 8
- Stop bits: 1, 1.5, 2
- Parity bits: None, Even, odd, Space, Mark
- Stream control: RTS/CTS, XON/XOFF
- Operating temperature: -40~85°C
- Support system: Win2000/XP/Vista/Win7/8/8.1/10/NT4.0/CE 4.2/5.0/6.0/Vxworks/ Linux 2.4.x/2.6.x

4. Connector and Signal

DB9 pin type: RS-485/RS-422 output signal pin assignment (Port1-Port4)

DB9 Male(PIN)	Output signal	RS-422 Full-duplex	RS-485 Half-duplex
1	T/R+	Transmitting(A+)	RS-485(A+)
2	T/R-	Transmitting(B-)	RS-485(B-)
3	RXD+	Receiving(A+)	-
4	RXD-	Receiving(B-)	-
5	GND	GND	GND
6	N/C	-	-
7	N/C	-	-
8	N/C	-	-
9	N/C	-	-



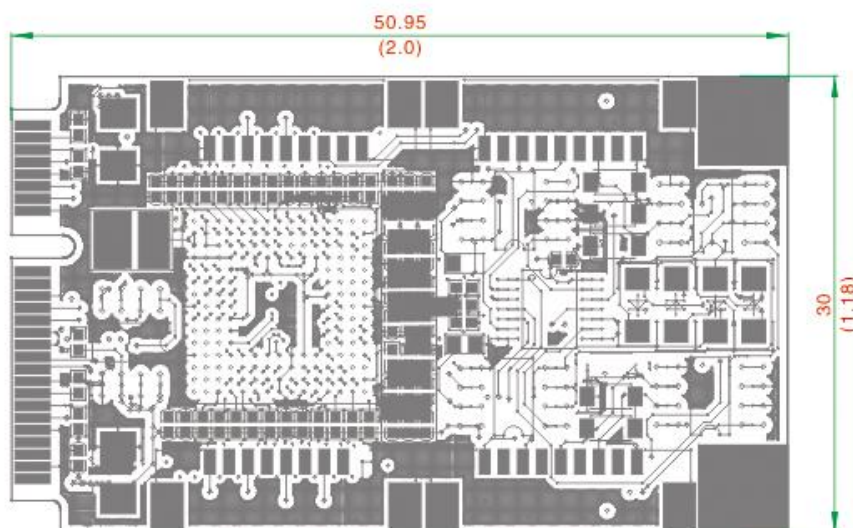
5. Product View (Appearance)



6. Structure dimensions

Dimension

Unit: $\frac{\text{mm} \pm 0.5}{(\text{inch}) \pm 0.02}$



7. Ordering

Model	Signal/ Interface		Port number		Protection level	Baud rate	Operating Environment			Power	
	PCI-E	RS-485 /422					Temperature		Humidity		
	Mini PCI-E	DB9 Male	MINI PCI-E	RS-485/422	RS-485/422		-25~70°C	-40~85°C	5~95%	plug and play	External power
UT-7884	Universal	√	1	8	±15KV ESD	300bps-921.6 kbps		√	√	√	