

Model: UT-7784B

(Product Name: Mini PCI-E to 4-port RS-232 high-speed multi-serial card)

Datasheet



UTEK TECHNOLOGY (SHENZHEN) CO., LTD.

Add: Room 1001, Building 7, Skyworth Innovation Valley, No. 8, Tangtou No.1 Road,
Shiyan Old Street, Bao 'an District, Shenzhen

Tel: +86-755-81202008

Fax: +86-755-27886083

Http: www.uotek.com

1. Overview

UT-7784B is a universal Mini PCI-E serial card designed for POS, ATM, and other applications for industrial automation system manufacturing and system integration. UT-7784B provides 4 RS-232 serial ports to connect a variety of serial devices such as PC, terminals, modems, printers, scanners, etc. Each port can reach a data rate of 921.6Kbps and provides modem control signals to ensure the compatibility of serial device peripherals.

2. Main Functions & Features

- 4-Port RS-232 Mini PCI-E Multi-Serial Card

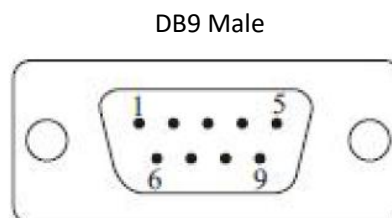
3. Technical Parameters

- Hardware Interface
Connection Type: 4 1.25T-9AB Sockets
BUS: MINI PCI Express
- Signal: RS-232: DCD, RXD, TXD, DTR, GND, DSR, RTS, CTS, RI
- Transmission rate: 300bps-921.6kbps
- Data bits: 5, 6, 7, 8
- Stop bits: 1, 1.5, 2
- Parity bits: None, Even, Odd, Space, Mark
- Stream control: RTS/CTS XON/XOFF
- Operating temperature: -40~85°C
- Weight: 100g
- Support system: Win2000/XP/Vista/Win7/NT4.0/CE 4.2/5.0/6.0/Vxworks/Linux 2.4.x/2.6.x

4. Hardware Definition

RS-232C Pin Assignment

DB9 Male(PIN)	RS-232C interface signal
1	GND
2	Receive data SIN (RXD)
3	Transmit data SOUT (TXD)
4	DTR
5	GND
6	DSR
7	RTS
8	CTS
9	RI

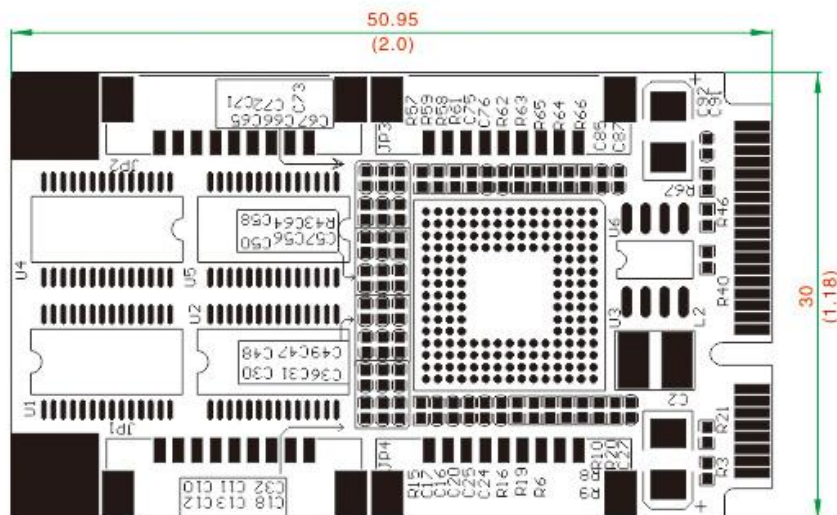


5. Product View (Appearance)



6. Structure dimensions

Dimension

Unit: $\frac{\text{mm} \pm 0.5}{(\text{inch}) \pm 0.02}$ 

7. Ordering

ORDERING

Model	Signal/ Interface		Port number		Protection level	Baud rate	Operating Environment			Power	
	PCI-E	RS-232					Temperature		Humidity		
	Mini PCI-E	DB9 Male	MINI PCI-E	RS-232	RS-485/422		-25~70°C	-40~85°C	5~95%	plug and play	External power
UT-7784B	Universal	√	1	1	±15KV ESD	300bps-921.6 kbps		√	√	√	