

## Model: UT-784

(Product Name: 4-Port Industrial RS-232 PCI-E Multi-Serial Card)

# Datasheet



### UTEK TECHNOLOGY (SHENZHEN) CO., LTD.

Add: Room 1001, Building 7, Skyworth Innovation Valley, No. 8, Tangtou No.1 Road,  
Shiyan Old Street, Bao 'an District, Shenzhen

Tel: +86-755-81202008

Fax: +86-755-27886083

Http: [www.uotek.com](http://www.uotek.com)

## 1. Overview

UT-784 is a universal PCI-E serial card designed for POS, ATM and other applications that can be used in industrial automation system manufacturing and system integration. UT-784 provides 4 RS-232 serial ports that can connect to a variety of serial devices such as PC, terminals, modems, printers, scanners, etc. Each port can reach a data rate of 921.6Kbps and provides modem control signals to ensure the compatibility of serial device peripherals.

## 2. Major Functions & Features

- Supports 4-Port Industrial RS-232 PCI-E Multi-Serial Card

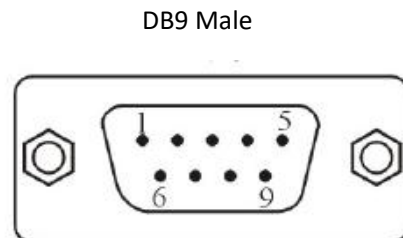
## 3. Technical Parameters

- Hardware Interface  
 Connection Type: 1 DR44 Female  
 BUS: X1 2.5Gbps PCI Express
- Signal: RS-232:DCD, RXD, TXD, DTR, GND, DSR, RTS, CTS, RI
- Transmission rate: 300bps-921.6kbps
- Data bits: 5, 6, 7, 8
- Stop bits: 1, 1.5, 2
- Parity bits: None, Even, odd, Space, Mark
- Stream control: RTS/CTS XON/XOFF
- Operating temperature: -40~85°C
- Support system: Win2000/XP/Vista/Win7/8/8.1/10/NT4.0/CE 4.2/5.0/6.0/Vxworks/Linux 2.4.x/2.6.x
- RS-232 interface rate up to 921.6Kbps, support 256byte FIFO driver and built-in hardware and software flow control, universal PCI-E interface

## 4. Hardware Definition and Initial Setup

**DB9 pin: RS-232 output signal pin assignment (port1-port4)**

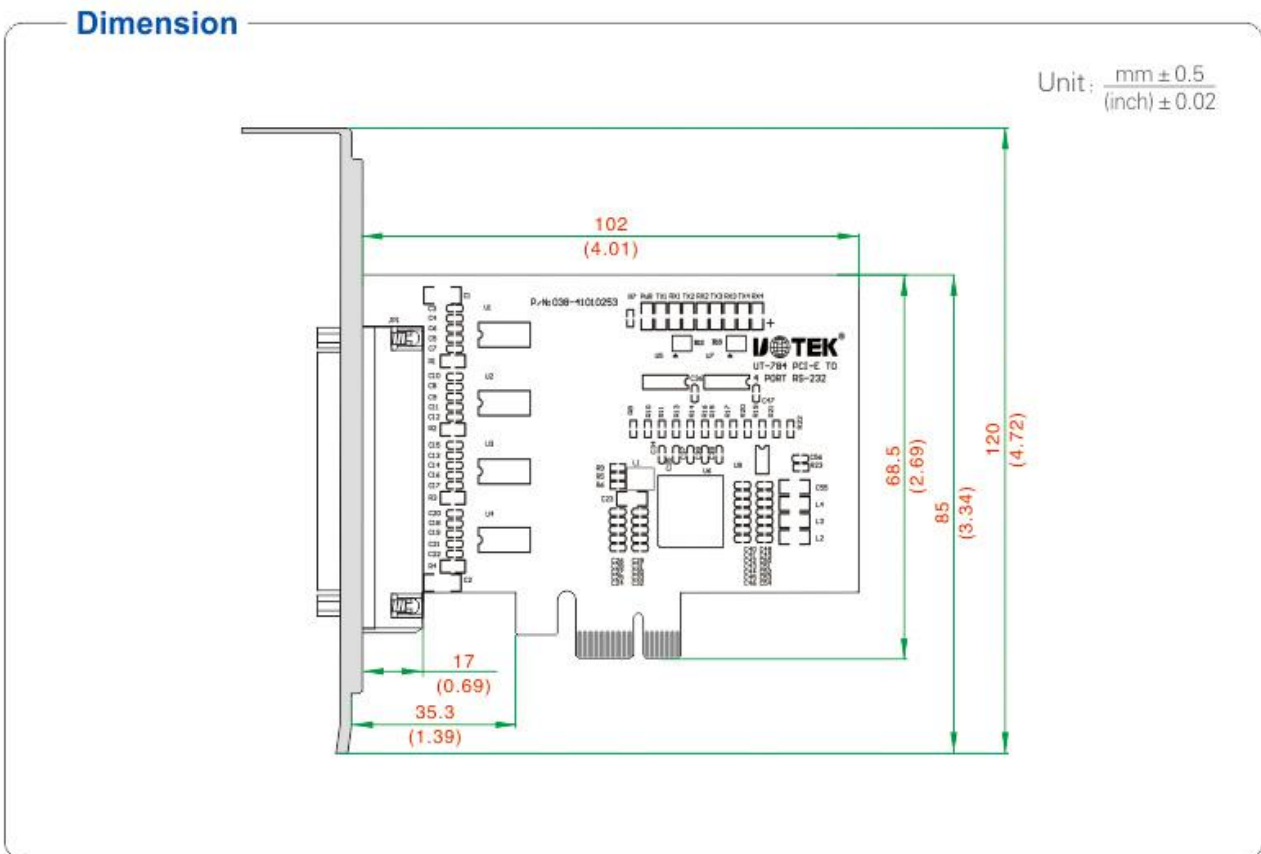
DB9 Male(PIN)	RS-232C interface signal
1	GND
2	Receive data SIN (RXD)
3	Transmit data SOUT (TXD)
4	DTR
5	GND
6	DSR
7	RTS
8	CTS
9	RI



## 5. Product View (Appearance)



## 6. Structure dimensions



## 7. Ordering

### ORDERING

Model	Signal/ Interface		Port number		Protection level	Baud rate	Operating Environment			Power	
	PCI	RS-232	PCI	RS-232	RS-232		Temperature		Humidity	plug and play	External power
							-25~70°C	-40~85°C	5~95%		
UT-784	Universal	DR44	1	4	±15KV ESD	300bps-921.6 kbps		√	√	√	