

Model:UT-6002

10/100M to 2-Port RS-232/485/422 Serial Device Server

Datasheet



UTEK TECHNOLOGY (SHENZHEN) CO., LTD.

Add: Floor 8-10, Building 7, Skyworth Innovation Valley, No. 8, Tangtou No.1 Road, Shiyan Street, Shiyan Old Street, Bao 'an District, Shenzhen

Tel: +86-755-81202008

Fax: +86-755-27886083

Http: www.uotek.com

1. Overview

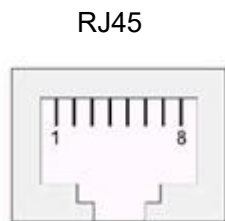
UT-6002 series serial device server provides serial port to network function, which can convert RS-232/485/422 serial port to TCP/IP network interface and realize bi-directional transparent transmission of data between RS-232/485/422 serial port and TCP/IP network interface. So that serial devices can immediately have TCP/IP network interface function, and support the IEEE802.3AF standard, can be directly through the network cable power supply, connected to the network for data communication, greatly expanding the communication distance of serial devices.

2. Technical Parameters

- CPU: 150MHz
- Memory: data buffer (each port) ≥60KB
- Ethernet port: RJ-45, 10/100M (built-in 2KV electromagnetic isolation, surge 10/700us, common mode 2000V / differential mode 1000V), auto MDI/MDI-X
- POE Standard: supports IEEE802.3AF
- Protocol: IP, ICMP, UDP, TCP, HTTP, TELNET, DNS, DHCP, SNMP
- OS: supports Windows/XP/2003/Win 7/8/10 32/64 bit
- Operating mode: VCOM, TCP SERVER, TCP CLIENT, UDP, Serial Telnet Mode , Remote Pair mode, RFC 2217, Modbus TCP Servers, Modbus TCP
- Supports 4 hosts simultaneous connection
- Configuration: Web browser, VCOM Utility, Telnet
- Number of serial ports: 2, RJ-45(UT-6002MT adopts 3.81 4-pin terminal block)
- Serial port protection: RS-232/485/422 surge 10/700 us, common mode/differential mode 0.5KV
- Baud rate: 300-921600bps
- Check bit: None, Odd, Even, Mark, Space
- Data bit: 7, 8
- Stop bit: 1, 1.5, 2
- Flow control: RTS/CTS, XON/XOFF
- Power: 5V(4.75~5.25), 12~36VDC, 12~60VDC with optional POE function, surge 1.2/50us, common mode 2000V/differential mode 1000V
- ESD protection: whole machine contact 6KV, air 8KV
- Operating current: 350mA@12V max
- Power interface: 5.08mm 3-pin terminal block & DC input
- Operating temperature: -40 ~ 85℃
- Storage temperature: -40 ~ 85℃
- Relative humidity: 5 ~ 95%(non-condensing)

3. Pin definition

1. UT-6002 serial port pin definition



RJ45	RS-232	RS-485	RS-422
1	TxD	T/R+	TxD+
2	RxD	T/R--	TxD-
3	RTS		RxD+
4	CTS		RxD-
5			
6	GND	GND	GND
7			
8			

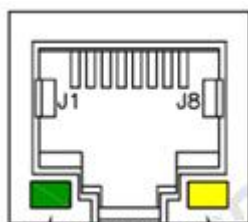
2. UT-6002 serial device server RS485/422 pin definition



3.81 terminal block	RS-485	RS-422	Description
1	T/R+	TX+	Transmit/receive +
2	T/R-	TX-	Transmit/receive -
3		RX+	Receive +
4		RX-	Receive -



3. UT-6002 serial device server RJ45 network port pin definition



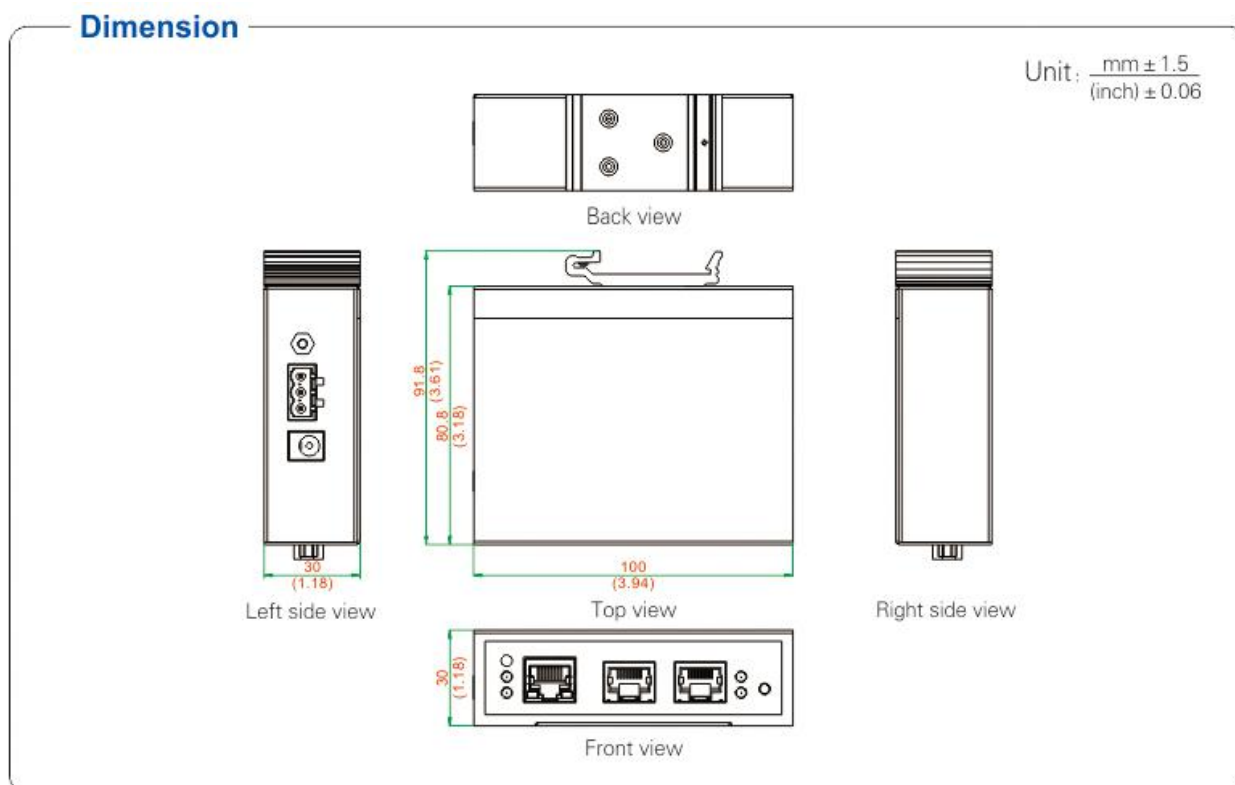
Green: LINK
Yellow: ACT

RJ45	EIA/TIA 568B	Definition	Description	EIA/TIA 568B
1	Orange/White	TX+	Transmit +	TX+
2	Orange	TX-	Transmit -	TX-
3	Green/White	RX+	Receive +	RX+
4	Blue	Data+	bi-direction data +	Data+
5	Blue/White	Data-	bi-direction data -	Data-
6	Green	RX-	Receive -	RX-
7	Brown/white	Data+	bi-direction data +	Data+
8	Brown	Data-	bi-direction data -	Data-

5. Product View (Appearance)



6. Structure Dimensions



7. Ordering Information

Ordering

Model	Signal/Port			Port qty			Protection		Baudrate	Environment		Power
	TCP/IP	RS-232/485/422	RS-485/422	TCP/IP	RS-232/485/422	RS-485/422	Po wer	TCP/IP	RS-232/485/422	Tempe rature	Humidity	
UT-6002	RJ45	RJ45		1	2		2KV	2KV	Common/ differential mode 0.5KV	300-921.6Kbps	-40/85℃ 5-95%	DC12-36V
UT-6002-5V	RJ45	RJ45		1	2		2KV	2KV		300-921.6Kbps	-40/85℃ 5-95%	DC5V
UT-6002-PD	RJ45	RJ45		1	2		2KV	2KV		300-921.6Kbps	-40/85℃ 5-95%	DC12-36V POE/AF
UT-6002-48V	RJ45	RJ45		1	2		2KV	2KV		300-921.6Kbps	-40/85℃ 5-95%	DC12-60V
UT-6002MT	RJ45		3.81-4 PIN terminal block	1		2	2KV	2KV		300-921.6Kbps	-40/85℃ 5-95%	DC12-36V
UT-6002MT-5V	RJ45			1		2	2KV	2KV		300-921.6Kbps	-40/85℃ 5-95%	DC5V
UT-6002MT-PD	RJ45			1		2	2KV	2KV		300-921.6Kbps	-40/85℃ 5-95%	DC12-36V POE/AF

Accessories: Power adapter/DIN-Rail